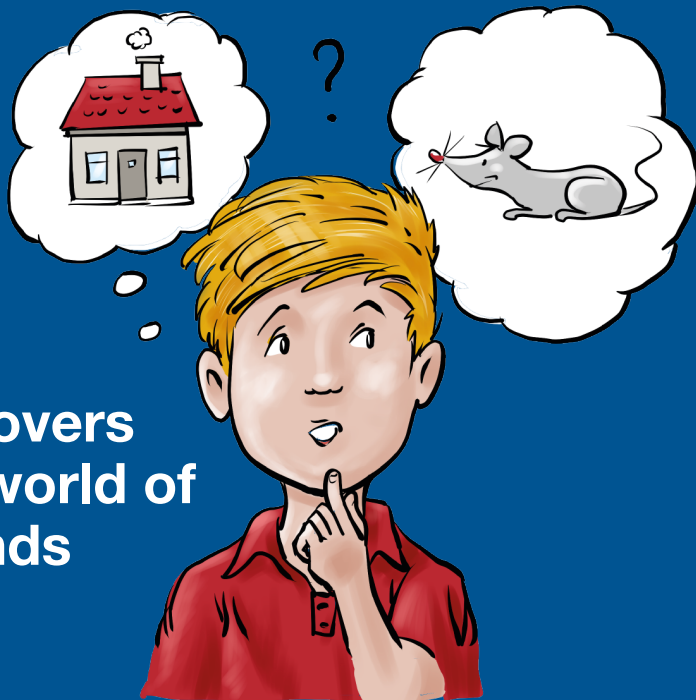


Emil discovers the world of sounds





Imprint:

Bundesinnung der Hörakustiker (biha) KdöR,
[Federal Guild of Hearing Aid Professionals]

Wallstrasse 5

55122 Mainz, Germany

Phone: +49 (0)6131-96560-0

Fax: +49 (0)6131-96560-40

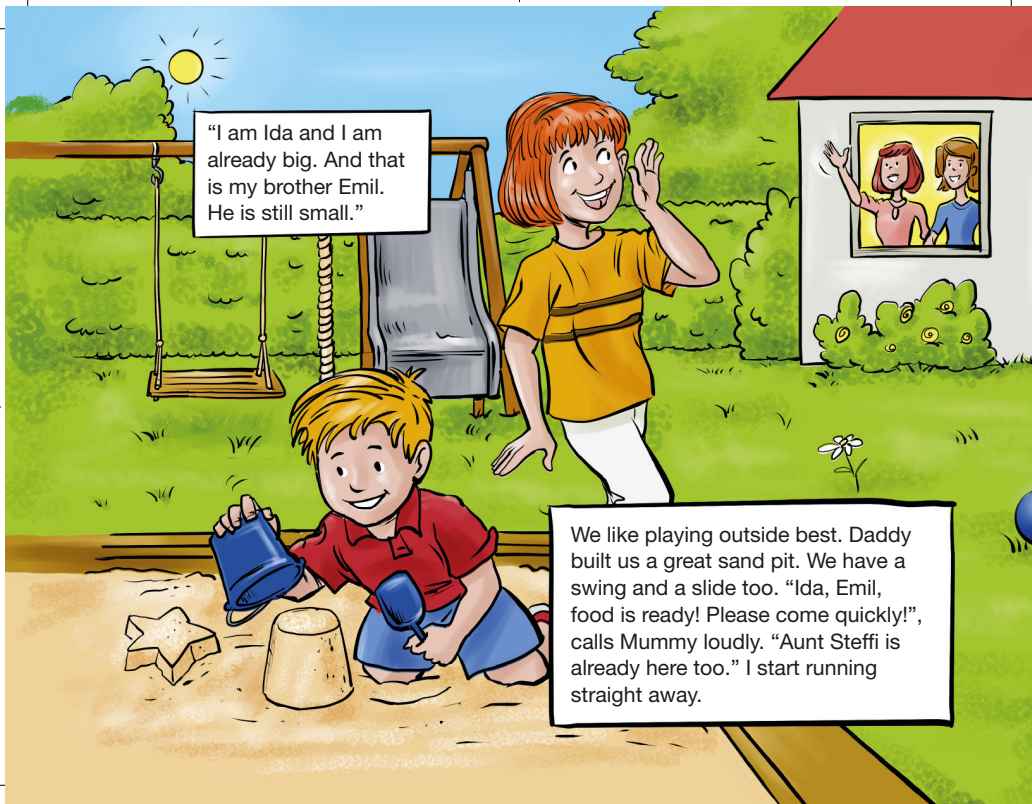
Email: info@biha.de

Internet: www.biha.de

Emil discovers the world of sounds

“I am Ida, maybe someone
will read the book to you.
Now listen...”



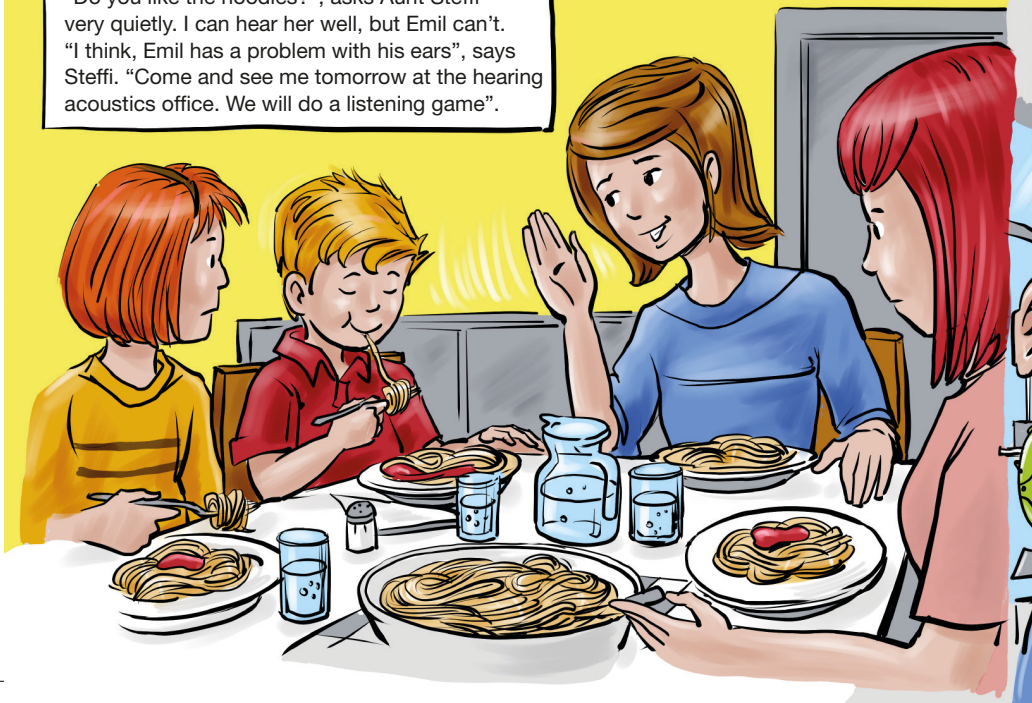


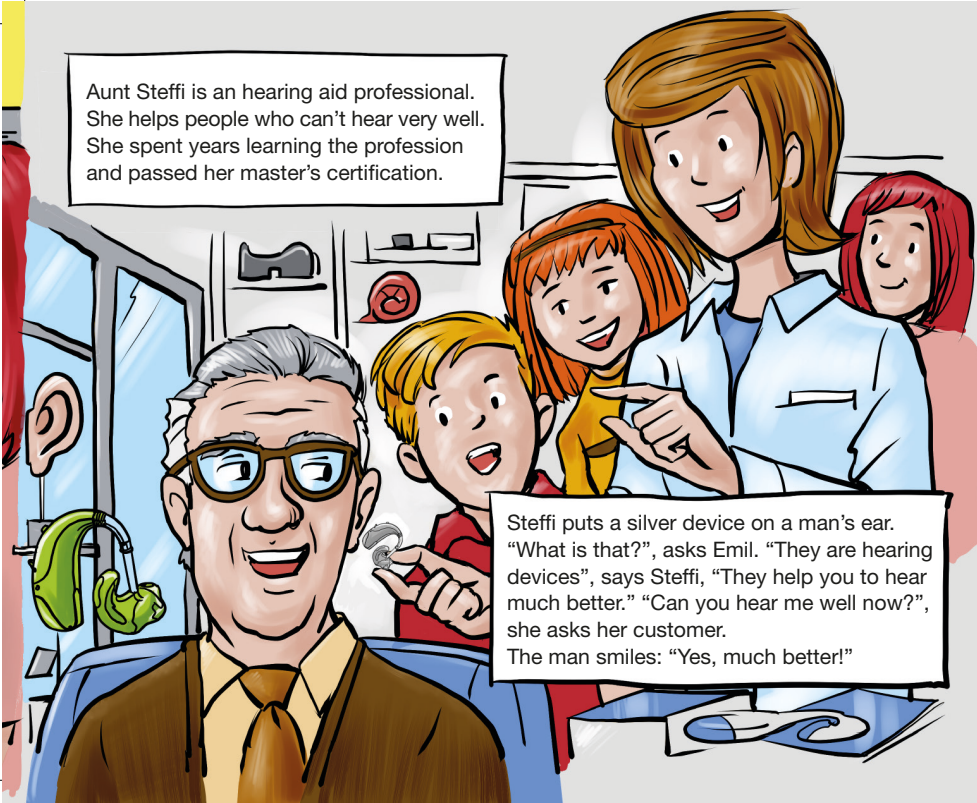
"I am Ida and I am already big. And that is my brother Emil. He is still small."

We like playing outside best. Daddy built us a great sand pit. We have a swing and a slide too. "Ida, Emil, food is ready! Please come quickly!", calls Mummy loudly. "Aunt Steffi is already here too." I start running straight away.



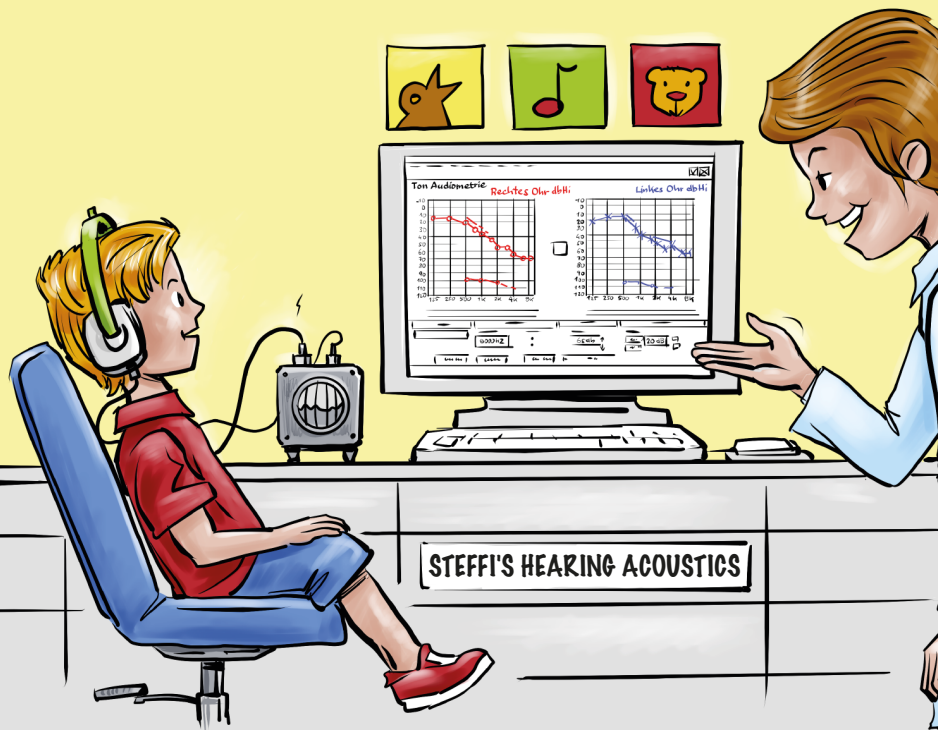
“Do you like the noodles?”, asks Aunt Steffi very quietly. I can hear her well, but Emil can’t. “I think, Emil has a problem with his ears”, says Steffi. “Come and see me tomorrow at the hearing acoustics office. We will do a listening game”.





Aunt Steffi is an hearing aid professional.
She helps people who can't hear very well.
She spent years learning the profession
and passed her master's certification.

Steffi puts a silver device on a man's ear.
"What is that?", asks Emil. "They are hearing
devices", says Steffi, "They help you to hear
much better." "Can you hear me well now?",
she asks her customer.
The man smiles: "Yes, much better!"





Steffi does a hearing test with Emil.

"I will now play some sounds to you, high sounds like birds chirping, and low sounds like your teddy makes, when he growls. As soon as you can hear the sounds very quietly, lift your hand."

Emil nods. Aunt Steffi puts the headphones on him and makes a start.

After the test Steffi shows Emil a picture on her computer. "The line shows how well you can hear. There, where the line goes down is when you could no longer hear a few of the sounds. That is what we call hearing loss. Lots of people have it. And with a hearing device you will be able to hear fantastically again."

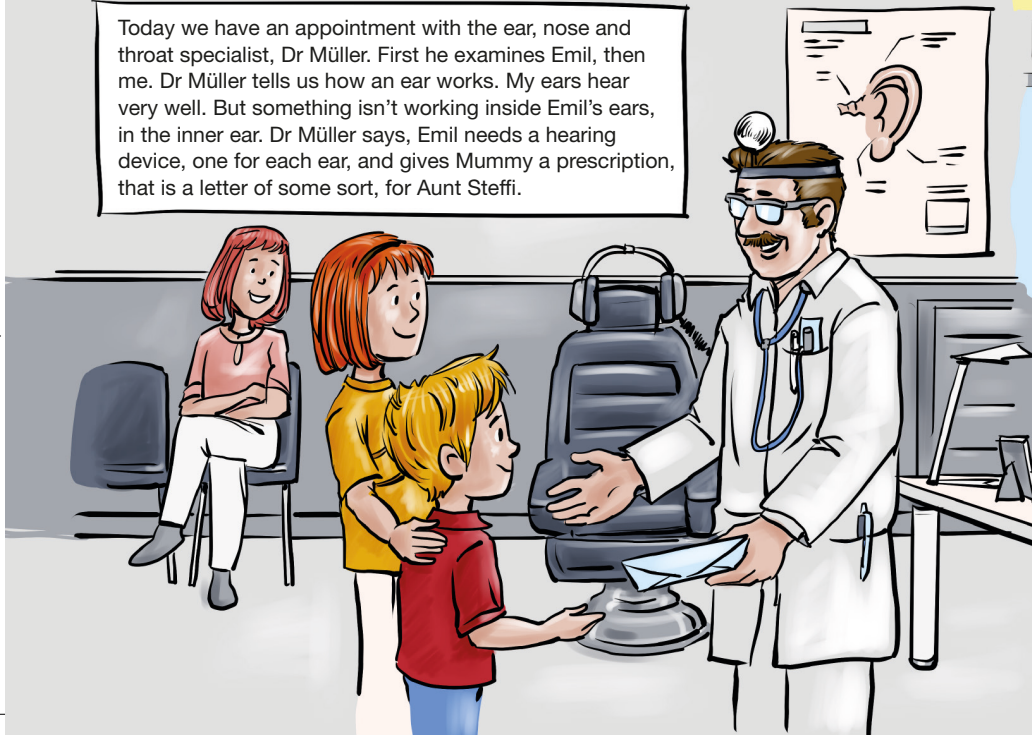
Emil sees the colourful devices.

"Can I have one like this?"

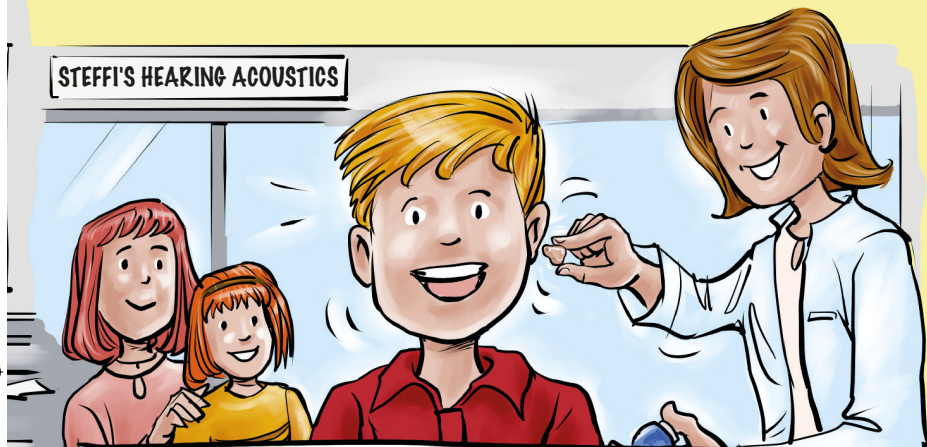
"That will do perfectly", says Aunt Steffi.

"But first you will go to the doctor's. He will take another good look in your ears and check your hearing."

Today we have an appointment with the ear, nose and throat specialist, Dr Müller. First he examines Emil, then me. Dr Müller tells us how an ear works. My ears hear very well. But something isn't working inside Emil's ears, in the inner ear. Dr Müller says, Emil needs a hearing device, one for each ear, and gives Mummy a prescription, that is a letter of some sort, for Aunt Steffi.



STEFFI'S HEARING ACOUSTICS



Hearing devices direct sounds into the ear through a tube. A piece that Steffi calls the earpiece holds the device so that the tube doesn't slip. And because every ear is different, every earpiece is different too. That's why Aunt Steffi took an impression of Emil's ears. "A plasticine ear" says Emil and giggles. Aunt Steffi creates the earpieces based on this template. They sit perfectly in Emil's ears, they don't pinch and don't slip. Steffi connects them with two hearing devices and adjusts them specifically to his hearing loss. Emil tries them on straight away. Suddenly he can hear much better. He is happy. Me and Mummy are too.

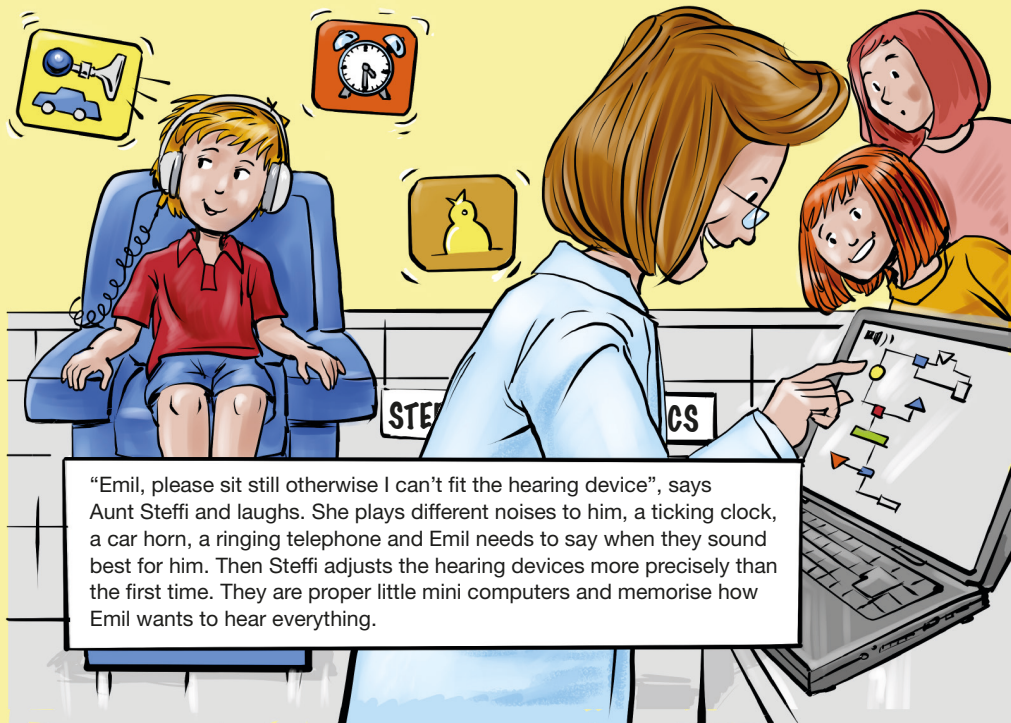


At home Emil dashes into the garden straight away. The sun is shining, the birds are chirping. But Emil is surprised. "Mummy, what is making that loud chirping sound?" "That's the birds! You couldn't hear them no more before", explains Mummy. "Do you remember what Aunt Steffi said? You can try out other hearing devices until everything sounds, how you want it to."



Emil gives Steffi the bright red hearing device: "I would like this one." But first of all he needs to tell Aunt Steffi what he heard with the hearing devices. Then she nods. "Great, they are perfect for you."






“Emil, please sit still otherwise I can’t fit the hearing device”, says Aunt Steffi and laughs. She plays different noises to him, a ticking clock, a car horn, a ringing telephone and Emil needs to say when they sound best for him. Then Steffi adjusts the hearing devices more precisely than the first time. They are proper little mini computers and memorise how Emil wants to hear everything.



Me and Mummy practice regularly with Emil. He can now hear really well again. When Mummy calls us for dinner, he is the first one at the table, especially when it is noodles for dinner.

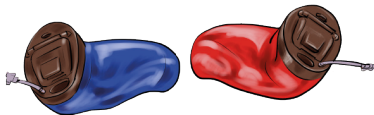


With further educational training, hearing aid professionals become paediatric audiologists. They help the smallest of patients. A special level of expertise and sensitivity are essential for this role, as little ones cannot give appropriate feedback yet in order to clearly define the level of the hearing impairment. Playful and situational hearing tests make it possible for the experts to measure the child's hearing.

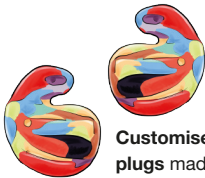
As parents are the ones who can best monitor their child on a daily basis, they are actively involved in the treatment. If the child is perfectly provided for and looked after then there is no longer anything standing between them and their discovery of the world.

Behind-the-ear-devices

are, as the name says, worn discreetly behind the ear: very small, high-performance mini computers.



In-the-ear devices, the tiniest of hearing devices: manufactured for a precise fit. For slight hearing loss.



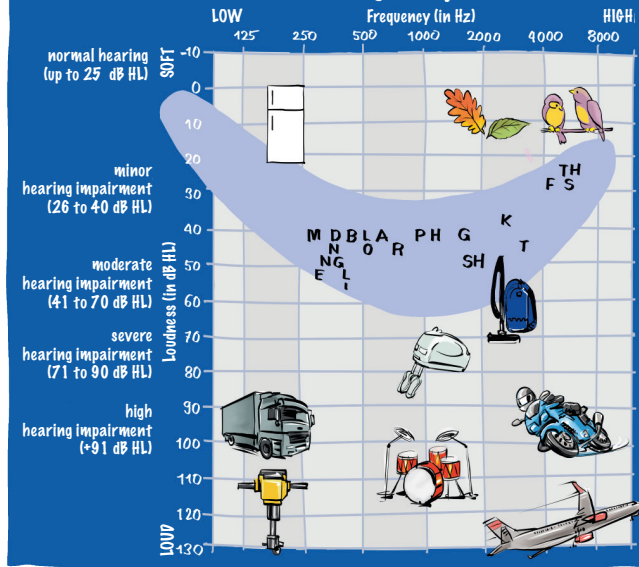
Customised water ear plugs made of soft silicone: creates a seal to prevent water getting into the ear. In every colour of the rainbow.



Capsule ear protection

or Mickey Mice: protects your ears from all noises. Easy to put on and take off. Even better: **customised hearing protection** – little marvels, perfect fit, perfect noise protection. Allows desired noises to pass through.

Loudness and listening comprehension



The loudness and listening comprehension

image shows which loudness (soft to loud) and sounds or rather frequencies (low to high) can be perceived by people with normal hearing. The greyish-blue field shows the distribution of vowels and consonants in language. Even with mild hearing impairment the hearing loses the ability to accurately hear speech sounds such as “F” and “S” and spoken language just becomes unclear.

